

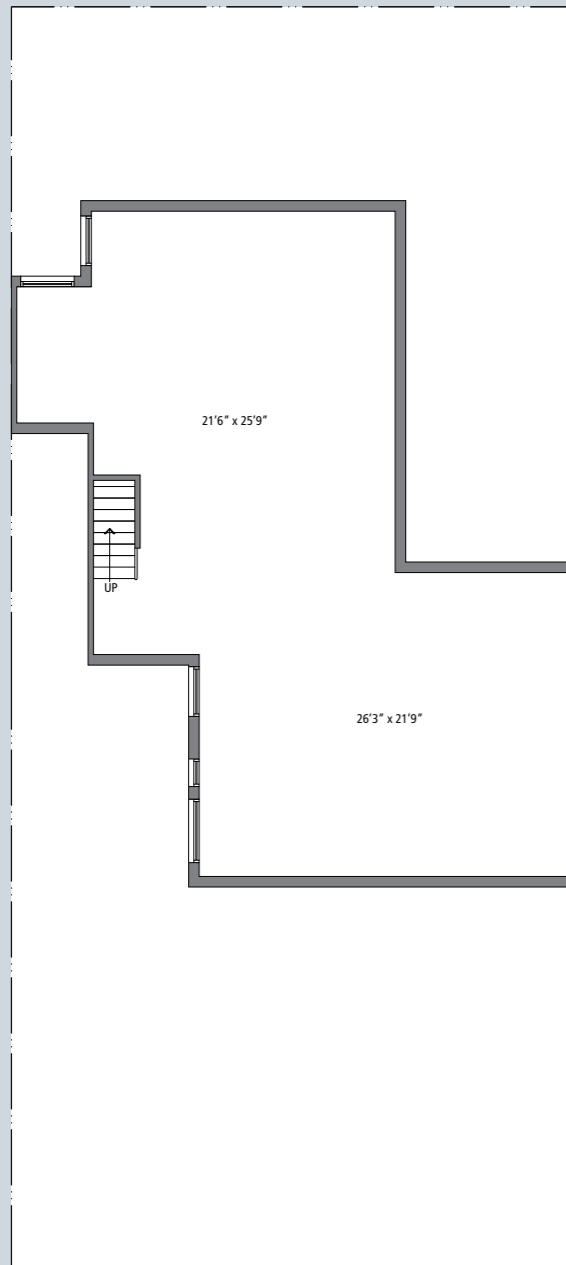
400 sq. yds. (Type C)

4 Bedroom, 3 Bathroom & S. Room

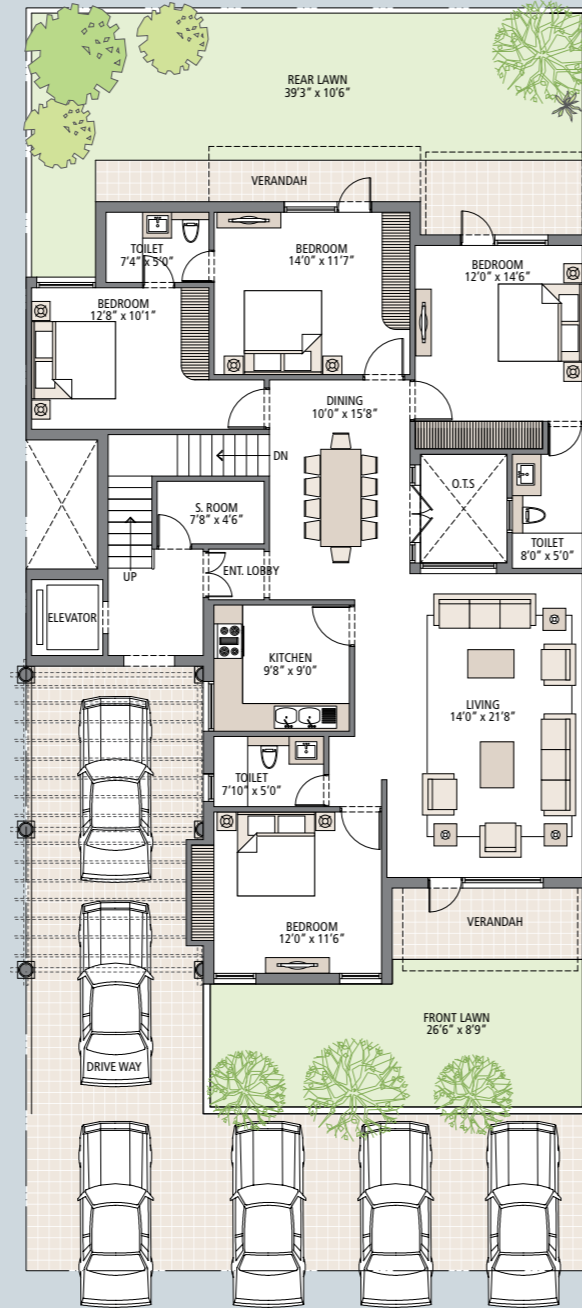


EMERALD FLOORS

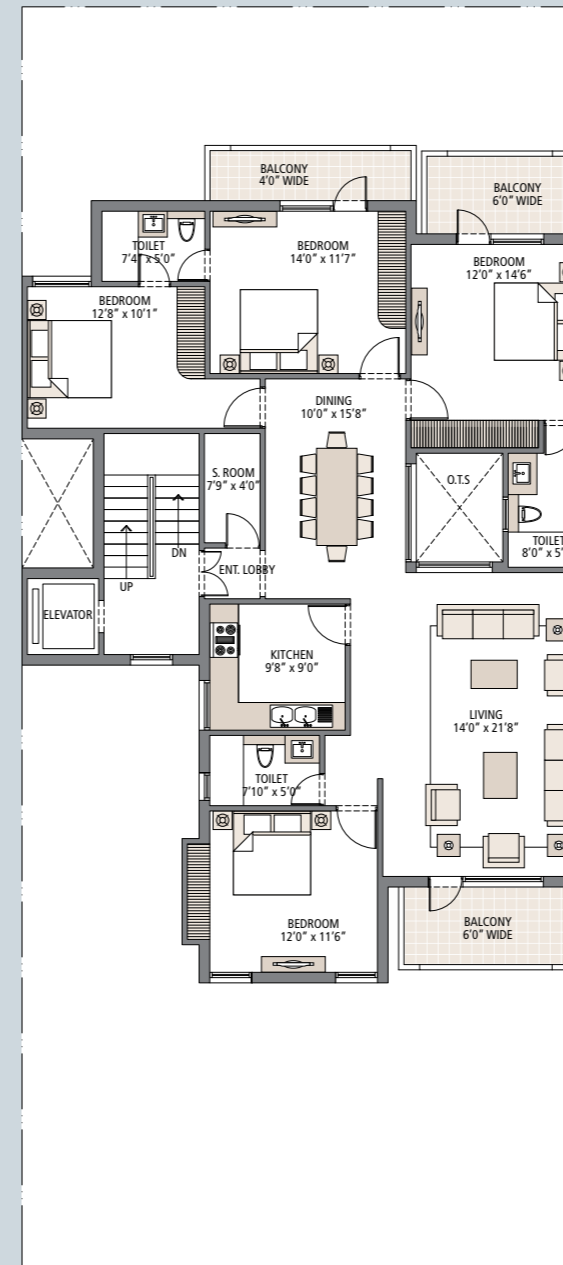
— Select —



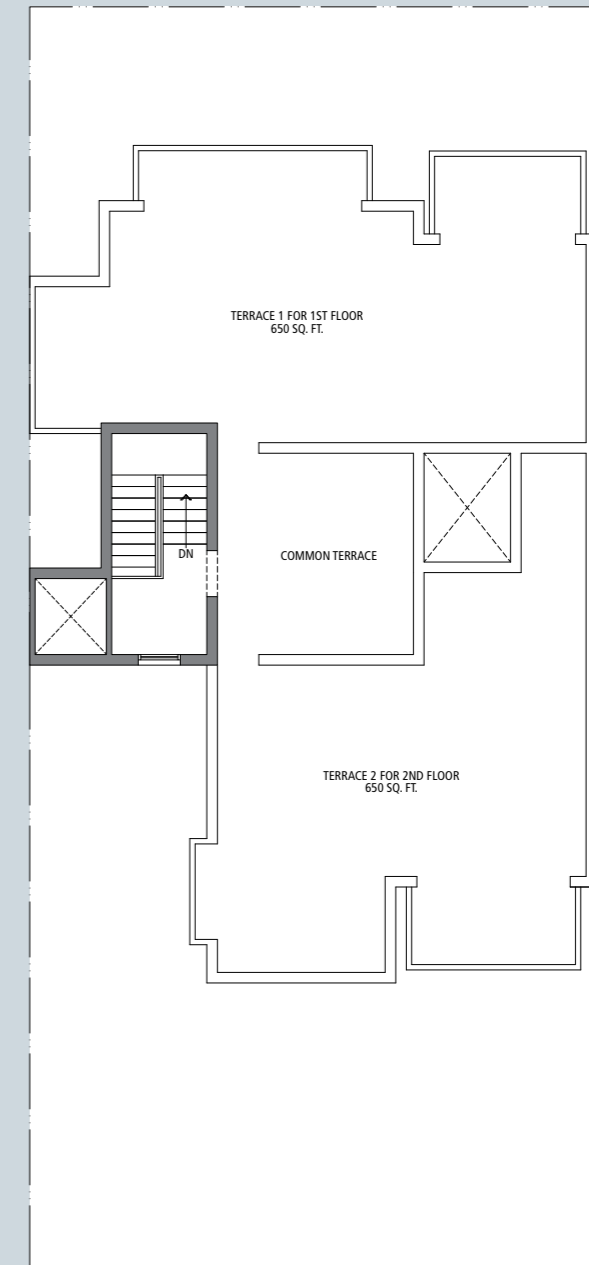
Basement



Ground Floor



Typical Floor



Terrace

Floor	Super Built-up area (Incl. staircase & balcony)	Lawns	Terrace	Total useable area
Ground (Incl. Basement)	3400 sq. ft.	675 sq. ft.	-	4075 sq. ft.
First	2000 sq. ft.	-	650 sq. ft.	2650 sq. ft.
Second	2000 sq. ft.	-	650 sq. ft.	2650 sq. ft.

1 sq. mtr. = 1.196 sq. yds. & 1 sq. mtr. = 10.76 sq. ft. In the interest of maintaining high standards, all floor plans, layout plans, areas, dimensions and specifications are indicative and are subject to change as decided by the company or by any competent authority. Soft furnishing, cupboards, furniture and gadgets are not part of the offering.